

TABLE 1
SPRING LAKE 2022 DEEP BASIN WATER QUALITY DATA

Date	Station	Sample Depth (feet)	Temperature (°F)	Dissolved Oxygen (mg/L) ¹	Total Phosphorus (µg/L) ²
4-Apr-22	1	1	41	13.1	31
4-Apr-22	1	9	41	13.3	29
4-Apr-22	1	18	41	12.8	29
4-Apr-22	3	1	41	13.4	31
4-Apr-22	3	18	41	11.2	34
4-Apr-22	3	36	40	10.9	36
4-Apr-22	4	1	42	13.4	36
4-Apr-22	4	10	42	12.8	32
4-Apr-22	4	20	41	13.5	31
4-Apr-22	5	1	41	12.9	62
4-Apr-22	5	8	41	12.8	38
4-Apr-22	5	16	41	12.0	33
4-Apr-22	6	1	41	12.1	38
4-Apr-22	6	7	41	12.1	59
4-Apr-22	6	15	41	12.5	47
4-Apr-22	7	1	42	11.4	50
4-Apr-22	7	9	41	11.5	44
4-Apr-22	7	18	40	11.7	45
4-Apr-22	8	1	40	12.6	32
4-Apr-22	8	20	40	13.9	34
4-Apr-22	8	40	40	13.2	37
4-Apr-22	9	1	40	13.8	34
4-Apr-22	9	15	40	13.5	49
4-Apr-22	9	30	40	12.8	53
4-Apr-22	10	1	41	—	30
4-Apr-22	10	13	41	10.7	32
4-Apr-22	10	26	40	11.9	82

¹ mg/L = milligrams per liter = parts per million.

² µg/L = micrograms per liter = parts per billion.

TABLE 1 (continued)
SPRING LAKE 2022 DEEP BASIN WATER QUALITY DATA

Date	Station	Sample Depth (feet)	Temperature (°F)	Dissolved Oxygen (mg/L) ¹	Total Phosphorus (µg/L) ²
29-Aug-22	1	1	78	10.1	112
29-Aug-22	1	9	76	7.1	112
29-Aug-22	1	18	75	5.4	104
29-Aug-22	3	1	76	7.0	107
29-Aug-22	3	17	76	7.0	107
29-Aug-22	3	34	66	6.1	106
29-Aug-22	4	1	77	6.8	120
29-Aug-22	4	10	77	7.1	124
29-Aug-22	4	20	76	4.8	140
29-Aug-22	5	1	77	9.4	113
29-Aug-22	5	8	77	8.2	136
29-Aug-22	5	16	76	8.1	101
29-Aug-22	6	1	77	9.0	127
29-Aug-22	6	7	77	8.4	124
29-Aug-22	6	14	76	8.1	118
29-Aug-22	7	1	77	7.0	107
29-Aug-22	7	9	77	7.0	137
29-Aug-22	7	18	76	6.7	144
29-Aug-22	8	1	76	8.1	114
29-Aug-22	8	19	76	8.1	112
29-Aug-22	8	38	62	0.0	1070
29-Aug-22	9	1	76	8.6	129
29-Aug-22	9	13	75	8.3	121
29-Aug-22	9	26	70	0.4	262
29-Aug-22	10	1	77	7.8	164
29-Aug-22	10	13	76	7.8	138
29-Aug-22	10	26	76	7.5	111

1 mg/L = milligrams per liter = parts per million.

2 µg/L = micrograms per liter = parts per billion.

TABLE 2
SPRING LAKE 2022 SURFACE WATER QUALITY DATA

Date	Station	Chlorophyll-a (µg/L) ¹	Secchi Transparency (feet)
4-Apr-22	1	5	4.5
4-Apr-22	3	5	4.0
4-Apr-22	4	7	4.0
4-Apr-22	5	5	3.0
4-Apr-22	6	3	2.5
4-Apr-22	7	2	2.0
4-Apr-22	8	9	4.5
4-Apr-22	9	8	4.0
4-Apr-22	10	5	3.0
29-Aug-22	1	18	2.5
29-Aug-22	3	9	4.0
29-Aug-22	4	14	3.0
29-Aug-22	5	12	3.0
29-Aug-22	6	8	3.0
29-Aug-22	7	12	3.5
29-Aug-22	8	15	3.0
29-Aug-22	9	22	3.5
29-Aug-22	10	9	3.5

TABLE 3
SPRING LAKE PRE- AND POST-ALUM TREATMENT SUMMARY STATISTICS
1999-2022

	Total Phosphorus (µg/L) ²		Chlorophyll-a (µg/L) ¹		Secchi Transparency (feet)	
	Pre	Post	Pre	Post	Pre	Post
Mean	101	67	10	8	3.5	3.7
Standard Deviation	101	127	13	7	1.4	1.0
Median	73	42	7	6	3.5	3.5
Minimum	6	5	0	0	1.3	2.0
Maximum	786	1610	121	44	7.0	6.0
Number of Samples	364	732	96	238	103	235

¹ µg/L = micrograms per liter = parts per billion.

² µg/L = micrograms per liter = parts per billion.

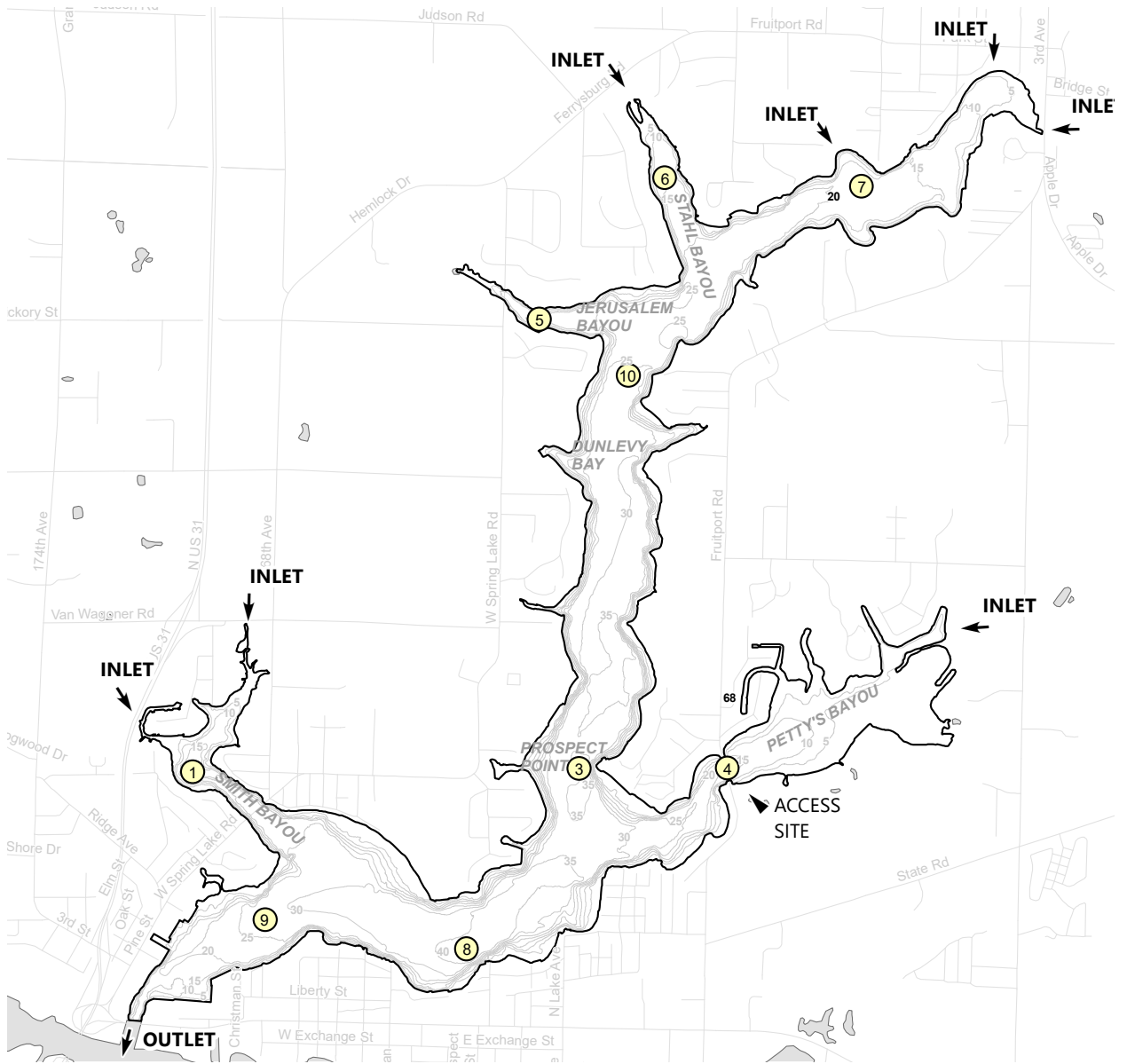


Figure 1. Spring Lake sampling location map.

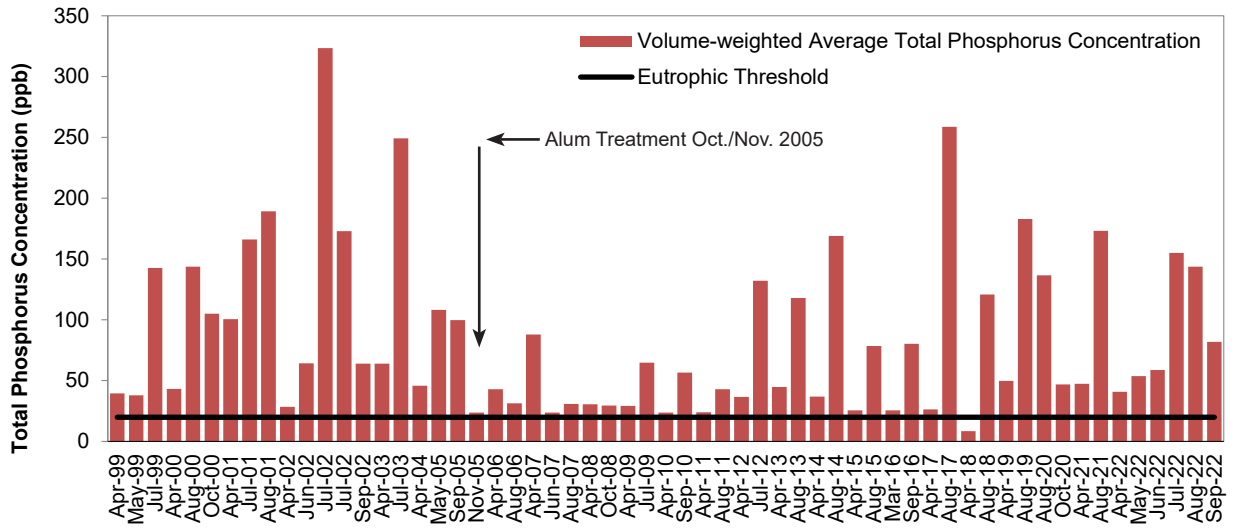


Figure 1. Volume-weighted average total phosphorus concentrations, 1999 - 2022.

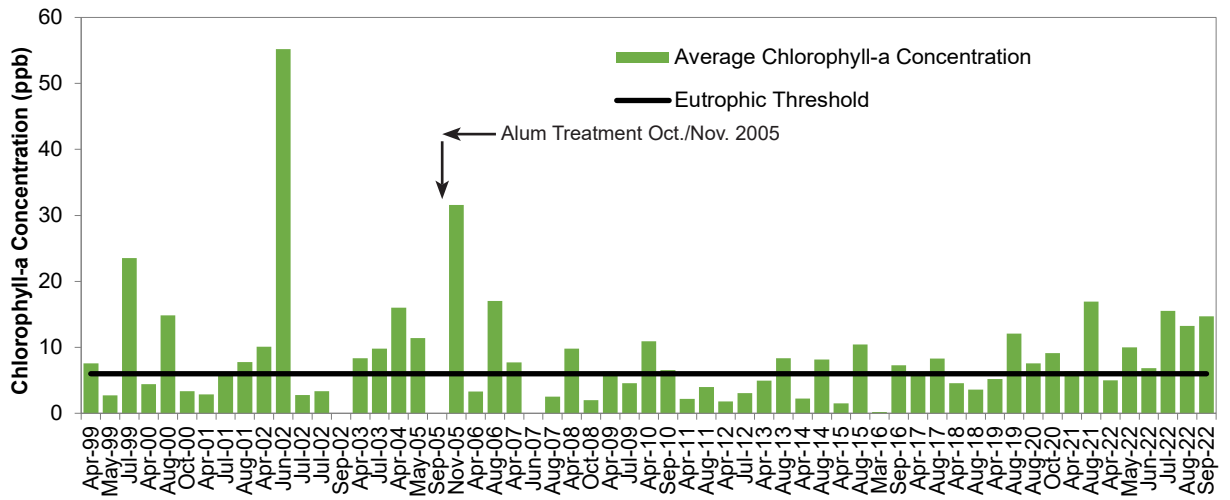


Figure 2. Chlorophyll-a concentrations, 1999 - 2022.

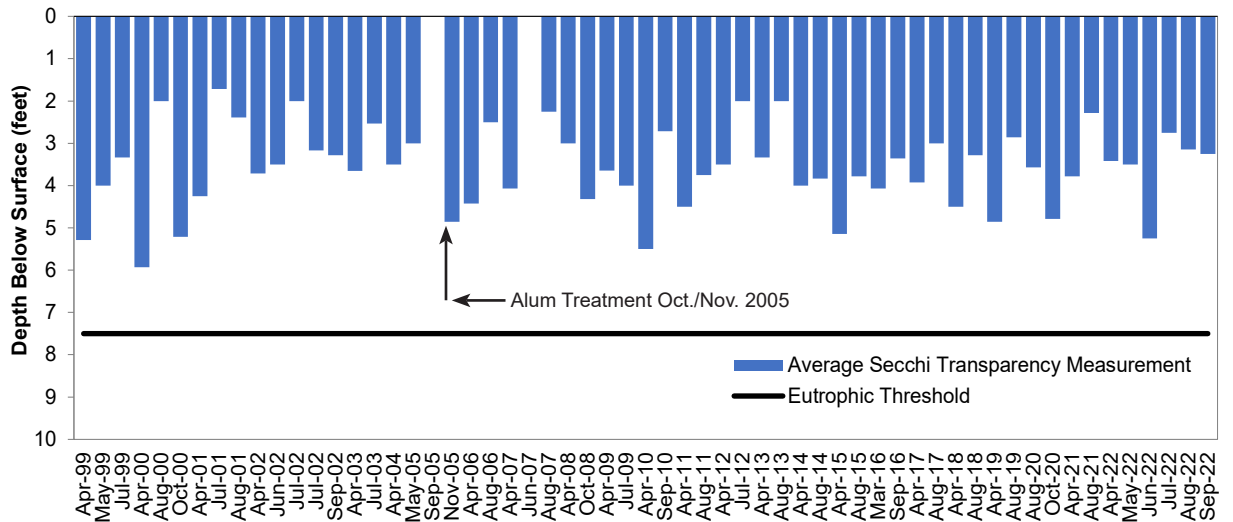


Figure 3. Secchi transparency measurements, 1999 - 2022.